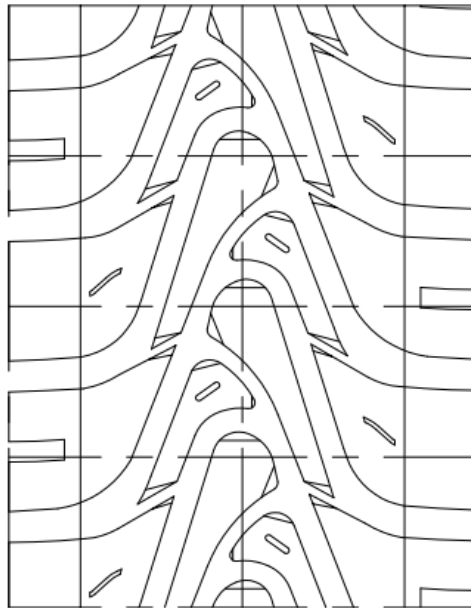




TYRE SPECIFICATIONS

2021-2025 AUSTRALIAN KARTING ASSOCIATION LTD. (Karting Australia)

<i>Tyre Manufacturer</i>	CHENG SHIN RUBBER ID. Co., LTD
<i>Tyre Supplier</i>	ST GEORGE KART CENTRE W/SALE PTY LTD
<i>Make</i>	MAXXIS
<i>Model</i>	MW21 10x4.00-5
<i>Competition Group / Class/es</i>	GROUP 1A – CADET9, CADET12
<i>Number of pages</i>	4
<i>Number of appended pages</i>	

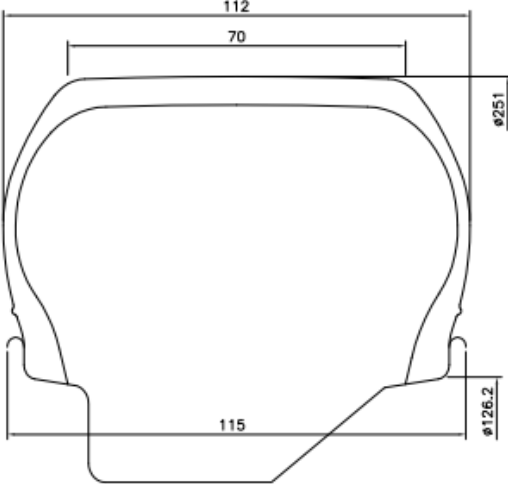


TREAD DESIGN DRAWING

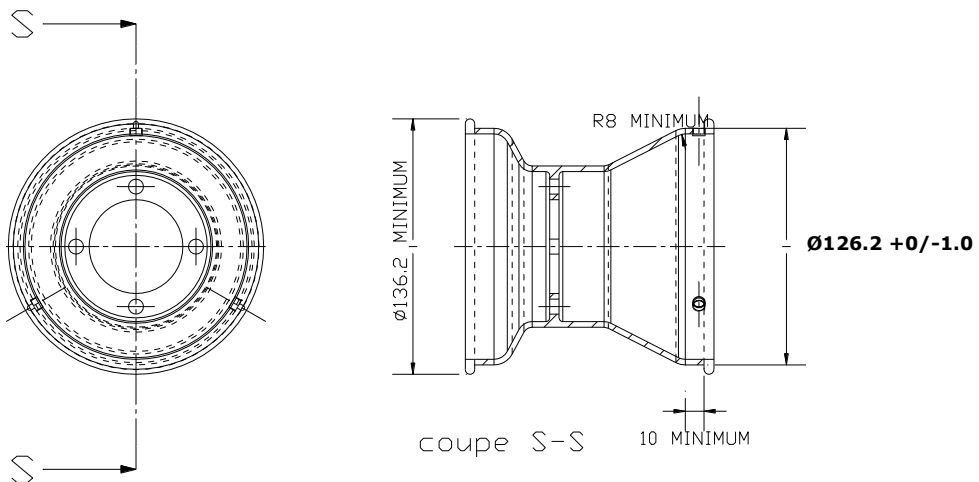
TECHNICAL DESCRIPTIONS

At a temperature of 23°C +/- 2°C and with a humidity of 50% +/-5%

Pt	Descriptions	Value		Tolerances
1	Dimensions	10X4.00-5		-
2	Tread compound designation	MW21		-
3	Service pressure	1.0 bar		+/- 0,3 bar
4	Maximum inflation pressure	4 bar		Max
5	Recommended Inflation pressure	0.6 bar		
6	Maximum load capacity	90 kg		Max
7	Maximum speed	200 km/hr		Max
8	Depth of tread	4.5		+/- 0,5 mm
9	Weight in grams	980		+/- 10 %
10	Numbers of ply	2		-
11	Tread thickness	5.9		+/- 1,0 mm
12	Number of tread wear indicators	-		-
13	Carcass material	Polyester		-
14	Angle of tyre canvass	31°		+/- 3°
15	Canvass thread type (According to ISO)	1000D/2		-
16	Tubeless tyre	YES		-
17	Superficial tread hardness (ISO 48 :2010 – 2 samples of 2mm thickness)	50°		+/- 5 DIDC - IRHD
18	Shore hardness	55		+/- 5
19	IRHD hardness			+/- 5
20	Classification (According to ISO 37:2005 – 300%) (DELETE OR ADJUST THOSE NOT APPROPRIATE)	SOFT	MEDIUM	

B	DRAWING OF CROSS SECTION AND DIMENSIONS OF TYRE FITTED TO A RIM																																			
		<table border="1" style="width: 100%; border-collapse: collapse;"> <thead> <tr> <th colspan="2" style="text-align: center;">Tolerances</th> </tr> </thead> <tbody> <tr> <td style="text-align: center;">Ø 251</td> <td style="text-align: center;">+/- 7</td> </tr> <tr> <td style="text-align: center;">112</td> <td style="text-align: center;">+/- 5</td> </tr> <tr> <td style="text-align: center;">Ø 126.2 *</td> <td style="text-align: center;">+/- 1</td> </tr> <tr> <td style="text-align: center;">115</td> <td style="text-align: center;">+/- 3</td> </tr> <tr> <td style="text-align: center;">70</td> <td style="text-align: center;">+/- 5</td> </tr> <tr> <td> </td> <td> </td> </tr> <tr> <td> </td> <td> </td> </tr> <tr> <td> </td> <td> </td> </tr> <tr> <td> </td> <td> </td> </tr> <tr> <td> </td> <td> </td> </tr> <tr> <td> </td> <td> </td> </tr> <tr> <td> </td> <td> </td> </tr> <tr> <td> </td> <td> </td> </tr> <tr> <td> </td> <td> </td> </tr> <tr> <td colspan="2" style="text-align: center;">Comments</td> </tr> <tr> <td colspan="2" style="height: 50px;"> </td> </tr> </tbody> </table>		Tolerances		Ø 251	+/- 7	112	+/- 5	Ø 126.2 *	+/- 1	115	+/- 3	70	+/- 5																			Comments		
Tolerances																																				
Ø 251	+/- 7																																			
112	+/- 5																																			
Ø 126.2 *	+/- 1																																			
115	+/- 3																																			
70	+/- 5																																			
Comments																																				

Standardised 5" rim



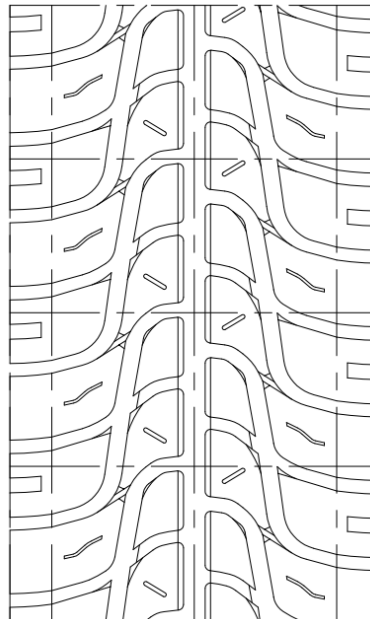
C	PHOTOS AND INSCRIPTIONS	<i>Only inscriptions which will not change during production are mentioned below.</i>		
<i>Photo of tyre external side wall</i>		<i>Inscriptions on tyre external side wall</i>		
		<i>Text</i>	<i>Height</i>	<i>Stroke</i>
		10x4.00-5	10.5mm	4-6mm
		Mold No.	3.5mm	0.5mm
		MADE IN TAIWAN	3mm	0.5mm
		FOR RACING PURPOSE ONLY MAX. INFLATION PRESSURE 4.0KG/CM ²	3mm	0.5mm
		MAXXIS	14mm	4-7mm
		MAXXIS (print)	17mm	5-6mm
	15.5mm	2mm		
<i>Photo of tyre internal side wall</i>		<i>Inscriptions on tyre internal side wall</i>		
		<i>Text</i>	<i>Height</i>	<i>Stroke</i>
		10x4.00-5	10.5mm	3-7mm
		Mold No.	3.5mm	0.5mm
		CIK MINI	8mm	2.5mm
		MAXXIS (print)	17mm	5-6mm
		TUBELESS	3mm	0.5mm
			19mm	1.5-4mm
	16mm	0.35mm		



TYRE SPECIFICATIONS

2021-2025 AUSTRALIAN KARTING ASSOCIATION LTD. (Karting Australia)

<i>Tyre Manufacturer</i>	CHENG SHIN RUBBER ID. Co., LTD
<i>Tyre Supplier</i>	ST GEORGE KART CENTRE W/SALE PTY LTD
<i>Make</i>	MAXXIS
<i>Model</i>	MW22 11x5.00-5
<i>Competition Group / Class/es</i>	GROUP 1A – CADET9, CADET12
<i>Number of pages</i>	4
<i>Number of appended pages</i>	

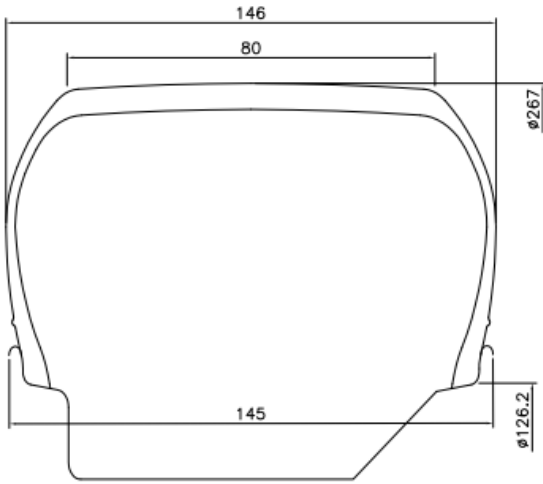


TREAD DESIGN DRAWING

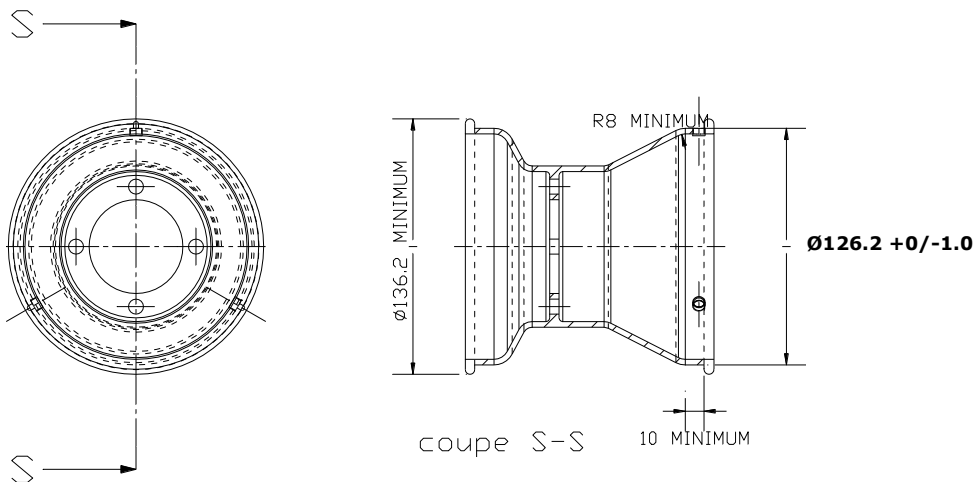
TECHNICAL DESCRIPTIONS

At a temperature of 23°C +/- 2°C and with a humidity of 50% +/-5%

Pt	Descriptions	Value		Tolerances
1	Dimensions	11X5.00-5		-
2	Tread compound designation	MW22		-
3	Service pressure	1.0 bar		+/- 0,3 bar
4	Maximum inflation pressure	4 bar		Max
5	Recommended Inflation pressure	0.6 bar		
6	Maximum load capacity	90 kg		Max
7	Maximum speed	200 km/hr		Max
8	Depth of tread	4.5		+/- 0,5 mm
9	Weight in grams	1150		+/- 10 %
10	Numbers of ply	2		-
11	Tread thickness	5.9		+/- 1,0 mm
12	Number of tread wear indicators	-		-
13	Carcass material	Polyester		-
14	Angle of tyre canvass	35°		+/- 3°
15	Canvass thread type (According to ISO)	1000D/2		-
16	Tubeless tyre	YES		-
17	Superficial tread hardness (ISO 48 :2010 – 2 samples of 2mm thickness)	50°		+/- 5 DIDC - IRHD
18	Shore hardness	55		+/- 5
19	IRHD hardness			+/- 5
20	Classification (According to ISO 37:2005 – 300%) (DELETE OR ADJUST THOSE NOT APPROPRIATE)	SOFT	MEDIUM	

B	DRAWING OF CROSS SECTION AND DIMENSIONS OF TYRE FITTED TO A RIM	
	<i>Tolerances</i>	
	$\text{Ø } 267$	± 7
	146	± 5
	$\text{Ø } 126.2^*$	± 1
	145	± 3
	80	± 5
	<i>Comments</i>	

Standardised 5" rim



C	PHOTOS AND INSCRIPTIONS	Only inscriptions which will not change during production are mentioned below.		
Photo of tyre external side wall		Inscriptions on tyre external side wall		
		Text	Height	Stroke
		11x5.00-5	11mm	3-7mm
		Mold No.	3.5mm	0.5mm
		MADE IN TAIWAN	3mm	0.5mm
		FOR RACING PURPOSE ONLY MAX. INFLATION PRESSURE 4.0KG/CM ²	3mm	0.5mm
		MAXXIS	14mm	4-7mm
		MAXXIS (print)	17mm	5-6mm
			15.5mm	2mm
Photo of tyre internal side wall		Inscriptions on tyre internal side wall		
		Text	Height	Stroke
		11x5.00-5	11mm	3-7mm
		Mold No.	3.5mm	0.5mm
		CIK MINI	8mm	2.5mm
		MAXXIS (print)	17mm	5-6mm
		TUBELESS	3mm	0.5mm
			19mm	1.5-4mm
			16mm	0.35mm