



Yamaha KT100S Engine Identification

1. Era 4 Class Australia

- The cylinder head must be a **sand cast** or **permanent mould type** (see photos below).
- The crank case will be identified with one of the serial numbers below (X denotes a number between 0 and 9)

SAND CAST

787-02XXX and 787-09XXX

PERMANENT MOULD

787-04XXX to 787-09XXX

787-100XXX to 787-103XXX

7F6-80XXX and 787-81XXX

7F6-080XXX to 7F6-081XXX

7F6-400XXX to 7F6-406XXX

7F6-500XXX

7U5-00XXX to 7U5-04XXX

7U5-050XXX to 7U5-056XXX

7U5-058XXX to 7U5-068XXX

7U5-100XXX

7U5-800XXX to 7U5-804XXX

DIE CAST

7U5-805XXX to 7UR-813XXX

7U5-440XXX

7U5-500XXX to 7U5-519XXX

Note: Die cast crankcases preceded die cast cylinder heads.

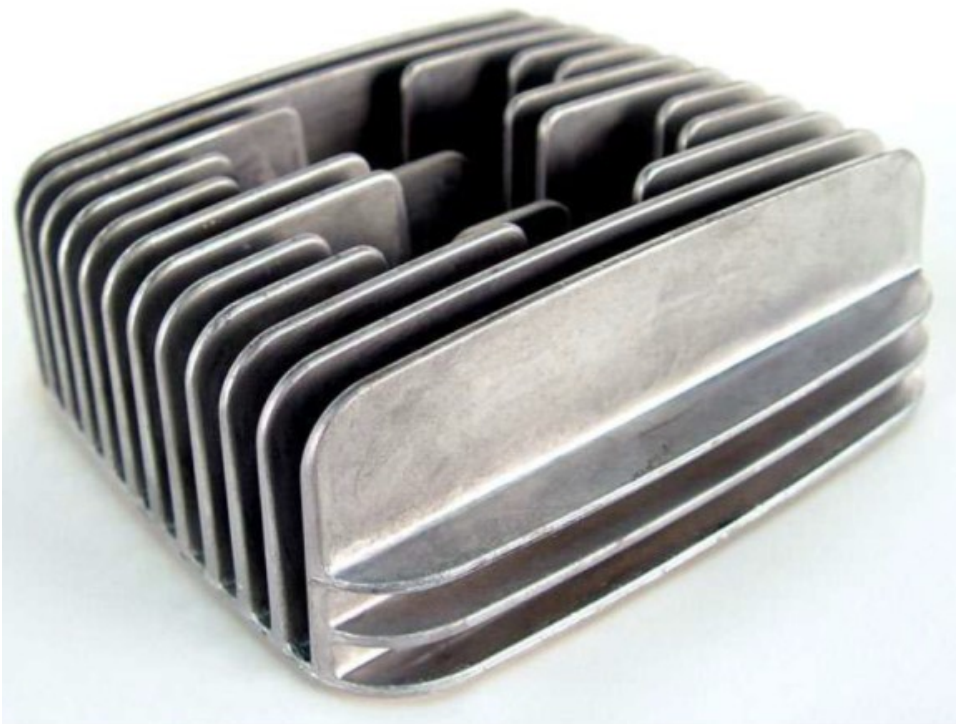
2. Era 5 Formula Yamaha

To be eligible to be log booked as ERA 5 Formula Yamaha, the Yamaha KT100S engine must meet the following criteria. The cylinder head for the engine can be either a sand cast/permanent mould type or pressure die cast Yamaha cylinder head. Induction silencer must be used and exhaust system must be as per the ERA rules from the day.

- The crank case will be identified with one of the serial numbers as above, under Era 4 heading and also includes 7MJ-XXXXXX onwards



SAND CAST/ PERMANENT MOULD



DIE CAST (not eligible for Era 4)